



KNTD-1200

## UC features for up to 1200 users

The KNTD-1200 IP PBX appliance is designed to bring leading edge voice, video, data, and ability features to enterprises, small and medium businesses, retail and residential environments in an easy-to-manage fashion. This enterprise-grade on premise IP PBX supports E1, SIP Trunk, RJ45 networks and offers scalability by supporting up to 1200 users. This secure and reliable IP PBX delivers unified communication features at an unprecedented price point without any licensing fees, costs-per-feature, or recurring fees. Host Standby N+1 redundancy System design.

KNTD-1200 server is a computer device that centrally processes and manages information, with multiple functions such as storing, processing, sharing, and protecting data. The KNTD-1200 server can be equipped with three major systems: telephone, broadcasting, and access control, and has efficient and stable performance to meet your various needs.



**1200 users**  
Supports up to 1200 users,  
120 SIP trunk accounts,  
up to 600 concurrent calls.



**Three-In-One**  
Optional,  
Telephone system,  
Broadcasting system,  
Access control system.



**Strongest-possible**  
security protection using  
HTTP.



**9th Generation**  
Intel® Core™ i7 Processors



**Supports IVR**  
(Interactive Voice Response).



**Built-in call recording server**  
recordings accessed  
via web user interface.

# SIP

**Supports call queue**  
for efficient call  
volume management.



**Linux System**



## Technical Parameter

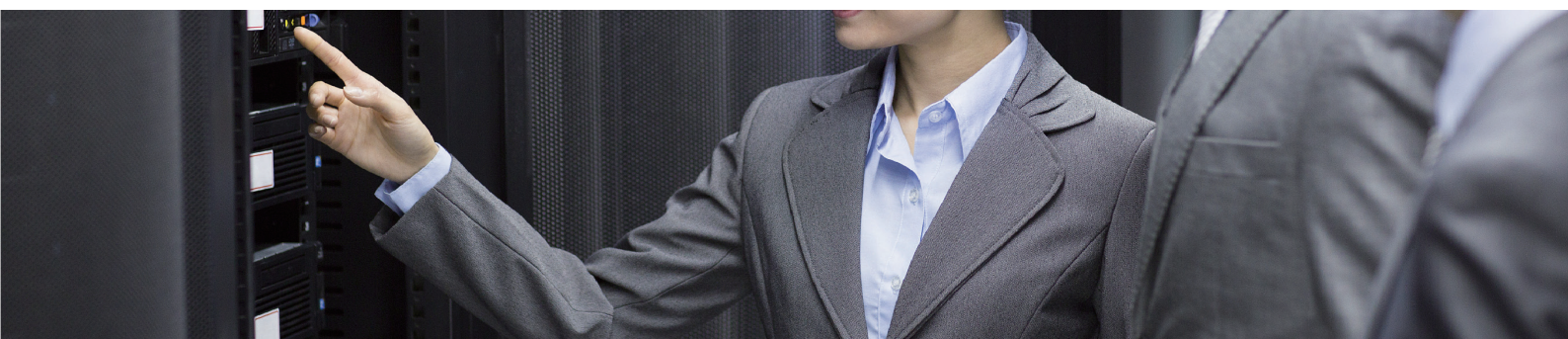
|   |   |
|---|---|
| Model   | KNTD-1200 IP PBX Enterprise - class unified communication system  |
| Hardware interface  |   |
|   | Host Standby N+1 redundancy System design   |
| Network Interface   | RJ45 Gigabit interface (10/100 / 1000M Ethernet adaptive)   |
| Reset switch  | Support, Web configuration  |
| Audio / video capability                                  |   |
| Speech algorithm  | G.711, 7.29, 7.23,7.26 encoding   |
| Voice   | G.711 A-law/ U-law, G.723.1, G.726, G.729A  |
| Video coding  | H.264.  |
| Signaling protocol  |   |
| DTMF detection method                                     | Support RFC2833, SIP INFO   |
| Digital signal  | SIP2.0  |
| Terminal management and automatic deployment capabilities | Support for SIP terminal plug -and-play auto-deployment (including DHCP / multicast SIP , support Remote upgrade,local upgrade)   |
| Network protocol  | TCP   UDP   IP, RTP DHCP,SSH,HTTP,SIP   |
| Safety  |   |
| Advanced defense  | Alert events, whitelists, blacklists  |
| Physical characteristics                                  |   |
| Global universal power supply                             | Input: 100~ ~ 240VAC, 50 / 60Hz;  |
| weight  | Equipment weight: 3.5 Kg; Package weight: 4,4Kg   |
| Use the environment                                       | Operating environment:32 -113° F/0~ 45° C, humidity 10 - 90%<br>(No condensation)<br>Storage environment: 14-140°F   / - 10 ~ 60° C, humidity 10 - 90%<br>(No condensation) |
| Size  | 428*259. 4*44. 6mm  |
| Installation  | Desktop or cabinet installation   |

## Additional features

|                        |   |
|------------------------|---|
| Multi language support | Web user interface supports English / Simplified Chinese, customizable<br>IVR / voice prompts in English, Chinese |
| Caller ID              | ETSI-DTMF   |
| Call Center            | Supports call queues.   |
| Customize Auto         | Supports IVR (Interactive Voice Response)   |
| Concurrent call        | Up to 5,000 SIP terminals can be registered, up to 500 concurrent calls   |
| members                | Calls waiting, Call transfer, Ringing group, Subgroup, meeting, broadcast, blacklist, call / intercom, etc        |

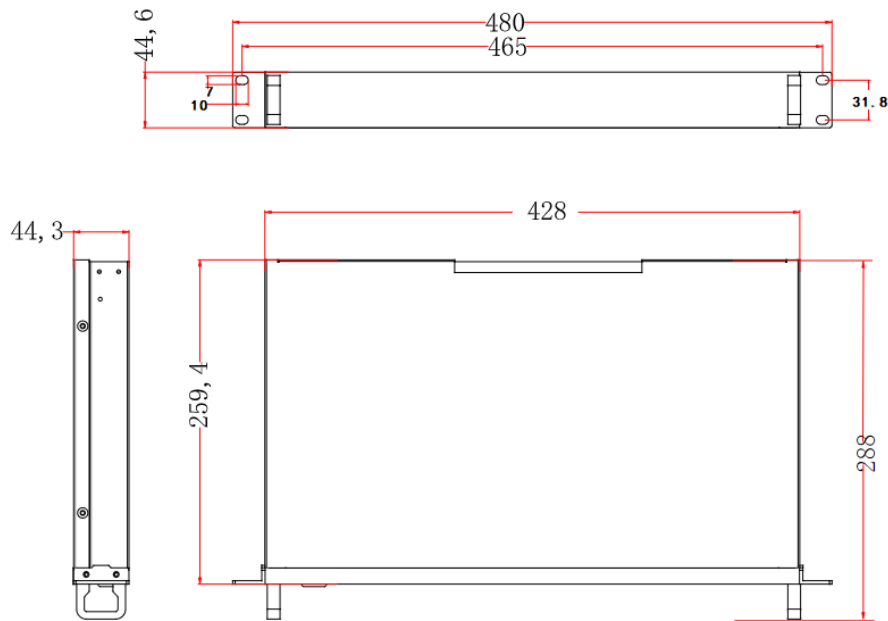
## KNTECHIP PABX MODEL NUMBER

| REGISTER USER | SIMULTANEOUS CALLS | MODEL NUMBER |
|---------------|--------------------|--------------|
| 50 line       | 15 line            | KNTD-50      |
| 100 line      | 30 line            | KNTD-100     |
| 300 line      | 90 line            | KNTD-300     |
| 500 line      | 150 line           | KNTD-500     |
| 800 line      | 400 line           | KNTD-800     |
| 1000 line     | 300 line           | KNTD-01K     |
| 3000 line     | 900 line           | KNTD-03K     |
| 5000 line     | 1500 line          | KNTD-05K     |



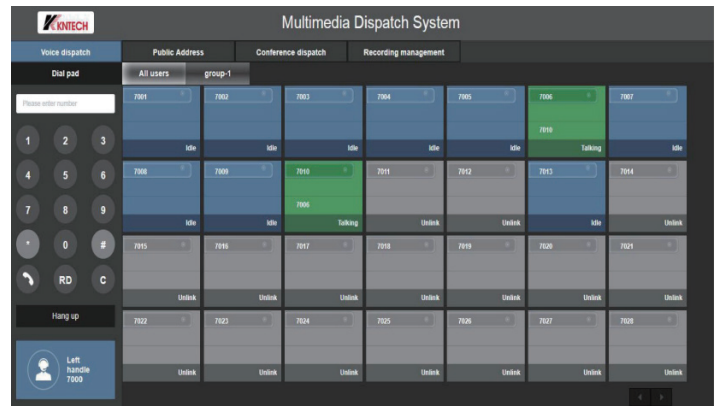
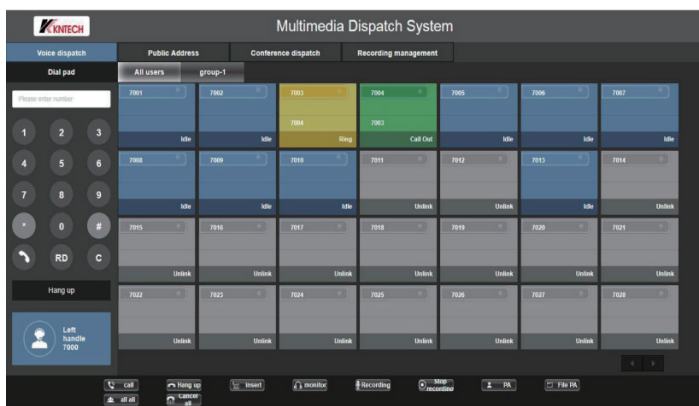
## Size display :

Unit: mm

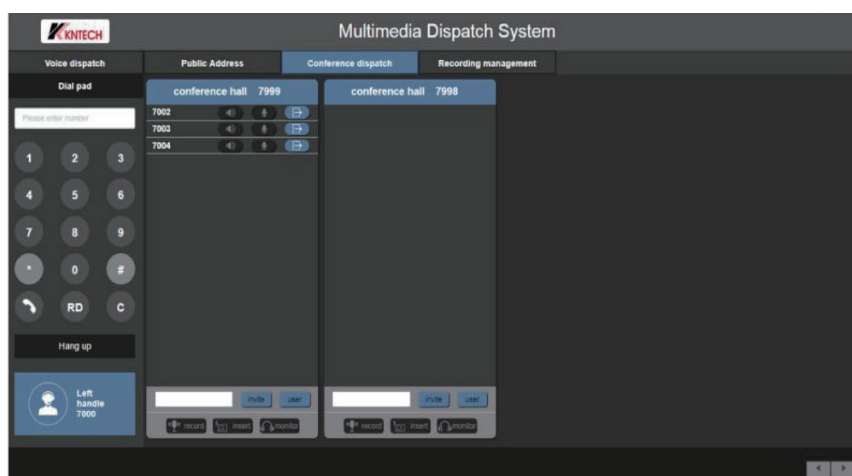


## Voice dispatch-Telephone call

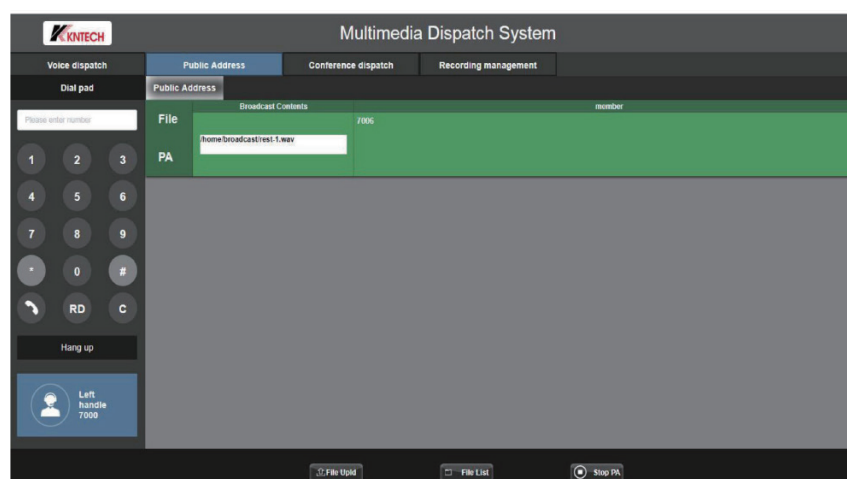
Blue color means on line , green color means ringing, yellow color means busy.



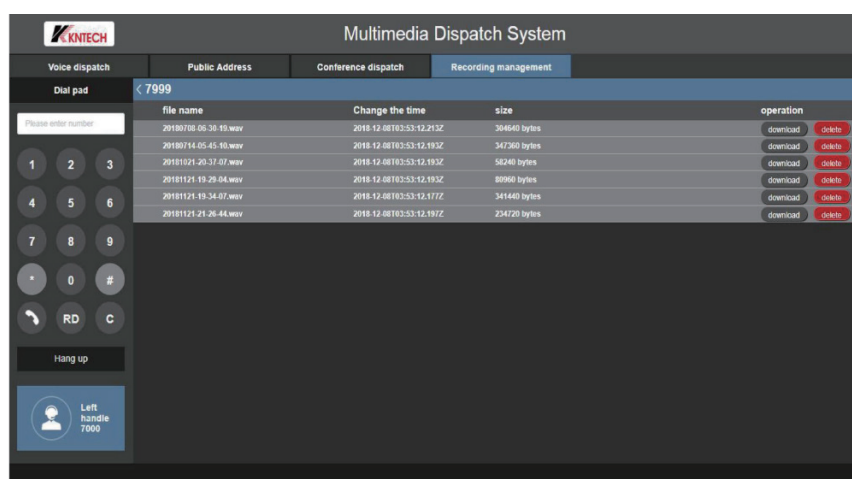
## Conference dispatch-Meeting room



## Public Address



## Configuration Manual





## Emergency telephone system

